



Agenda item no. 10

**St George Neighbourhood Partnership
Tuesday 24th June 2014**

Report of: Neighbourhood Partnership Co-ordinator

Title: FUNDING REQUEST - S106 Parks.

Contact Telephone Number: 0117 9036409 abdulrazak.dahir@bristol.gov.uk

RECOMMENDATIONS

- 1- The Neighbourhood Committee is asked to approve the release of £1,600 of Section 106 to install chicane gate at Dundridge Park.

Background

1. Metal gate located on Dundridge Lane opposite the junction of Preddy's Lane provides access to the Dundridge Park. The gate is within close proximity to residents' living in Furnwood, who their houses back on to Dundridge Park.


2. There is a history of anti-social behaviour associated with this site, which for many years divided the local community. Residents affected by the anti-social behaviour advocated for the gate closure whilst some park users advocated for keeping the gate. A compromise was reached to have the gate open from 7am to 7pm, which was operated by local volunteers.
3. This arrangement came to an end following the March NP meeting, when it was decided to keep the gate open.
4. Vulnerable residents from Furnwood are now anxious about antisocial behaviour to resume and the impact this may have in their wellbeing.

PROPOSAL

5. There is approximately £132,927 of Section 106 money available to the NP. This proposal is inline with the St George Green Investment Plan. In Particular Aim IS2, which state “To improve entrances to make the sites more inviting and to address particular access issues”.
6. The Environment subgroup discussed proposal to move the gate from its current location to suitable site along Dundridge Lane towards the main car park entrance. The group agreed to recommend chicane type gate, see appendix 1 – 3 for quote, illustration and image.

EQUALITIES IMPACT ASSESSMENT

7. It is not expected that there will be any adverse impacts to any equalities community from this investment decision.
8. By installing the chicane type gate, it is likely for this to mitigate the risk of children running out from the park onto main road. It is however expected to provide better access for all sectors of the community.

LT	Bristol City Council Landscapes Team Environment & Leisure Bower Ashton Depot Kennel Lodge Road Bower Ashton, Bristol BS3 2JT	T: (0117) 352 1923 E: landscapes@bristol.gov.uk	
-----------	---	---	---

QUOTATION

Customer details:	Abdurazak Dahir
Our Ref:	LSCQ1403005
Date:	6 th June 2014

Thank you for giving us the opportunity to provide you with a quotation.

SITE / ADDRESS: Dundridge Park, Bristol

TO:

Supply all necessary labour, materials and equipment to:

- **Secure current pedestrian exit so that it can no longer be used;**
- **Remove section of chain-link fencing in order to install the chicane;**
- **Supply and install chicane as per attached information – please note the chicane at Dundridge Park will NOT include the fencing upstands on either side;**
- **Clear all arisings and leave site clean and tidy.**
- **Please note that this quotation does NOT include for changes to the surfacing.**

For the sum of £1,600.00 plus VAT where applicable at the prevailing rate.

Conditions of Quotation

1. This price is valid for a period of 30 working days from the date above; the quotation will be kept live for a period of no longer than 6 months from date of issue.
2. Please be advised that any specific materials will need to be ordered in from the manufacturer and may incur a lead in time of several weeks.

Should you wish to proceed with these works, please complete the attached Works Request Form and send to landscapes@bristol.gov.uk.

In the meantime, if you require further information, please do not hesitate to contact us.

Richard Stransom
Landscapes Manager

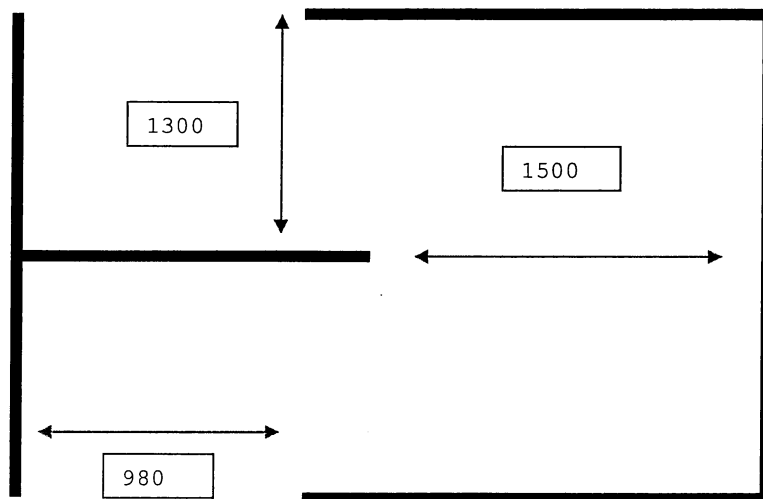
Memo: 16/04/13

Access to Parks and Open spaces – Gates and barriers

Bristol's Environmental Access Standard (EAS <http://www.bristol.gov.uk/page/community-and-safety/disability-equality>) states that the preference would be to avoid gates and barriers to parks and open spaces. Where it has been identified that a barrier is required at specific access points in order to manage local problems, the EAS describes a range of options for designs, and related considerations for construction.

The barrier illustrated on page 63 of the EAS, has been investigated further by BPAC members. It is a non - adjustable structure. We tried out this type of barrier at South Bristol Hospital and Leisure Centre site, see map and accompanying photographs. However, we recommend that the dimensions are slightly larger than those indicated on page 63, as mobility scooters are still struggling within those dimensions. See illustration below.

Fig 1



We have tried and tested the new dimensions. We believe that, where this is a suitable solution for the site, this barrier is a good option because it will

- Provide access to people using wheelchairs and mobility scooters, without the operation of a movable part or latches etc (as you would find on a kissing gate)
- It can be constructed of different materials to suit the context.
- Slow down most bicycles at key pinch points on routes
- And subject to you seeking Safer Bristol advice, this barrier will slow down scooters and motorbikes, where this is a problem.

Please note: Following consultation with BPAC, the K frame described on page 62 is no longer one we would recommend as a suitable accessible gateway to parks and open spaces. We will therefore amend the EAS when it is next reviewed, involving BCC officers in this process. Please also note that kissing gates and barriers with a locked hinged element that requires a radar key for people with a disability to operate, is NOT recommended in EAS and so should not be specified.

